

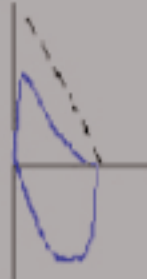


Flow-Volume Curve

Numeric Results

Disease Patterns

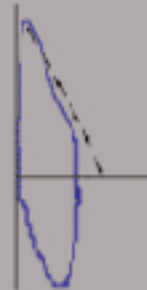
*Obstructive
Pattern*



*Decreased:
FEV₁
FEV₁/FVC%
FEV₁/FEV₆%*

*COPD
Chronic Bronchitis
Emphysema
Asthma
Cystic Fibrosis*

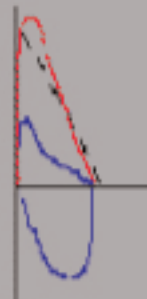
*Restrictive
Pattern*



*Decreased:
FVC and FEV₁
Normal:
FEV₁/FVC%*

*Sarcoid
Interstitial Fibrosis
Neuromuscular Disease
Effusion
Tumor
Obesity*

*Reversible
Pattern*



*FEV₁ and/or FVC
increase of
12% and 200 ml*

Asthma

Note: Other disease patterns may exhibit variance in the shape of the flow-volume curve and the numeric results, requiring further evaluation and/or testing.

American Thoracic Society. Lung Function Testing: Selection of reference values and interpretative strategies. Am Rev Respir Dis 1991;144 (5):1202-1218